



This document describes RNVNA license importing procedure.

1. Start RNVNA SW
2. In RNVNA window System -> License -> Import



The screenshot shows the "System" settings menu. It includes the following options:

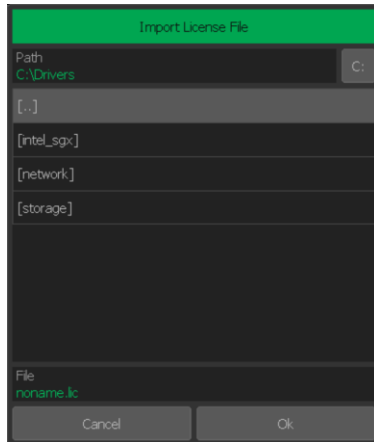
- System Correction: ON
- Avoid Ripple: ON
- Analyzer Model: R54
- License: Free
- Standby Mode: OFF
- About
- Preset
- Network Setup
- Plugins
- Program Exit
- Ok

#	License ID	Type	Devices	Max Quantity	Status
0		Free	Any	3	Active

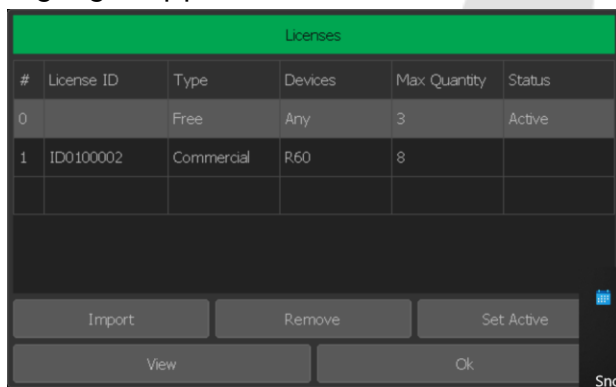
Buttons: Import, Remove, Set Active, View, Ok



3. Choose the location of the license file



4. Highlight applicable license



5. Set active

