

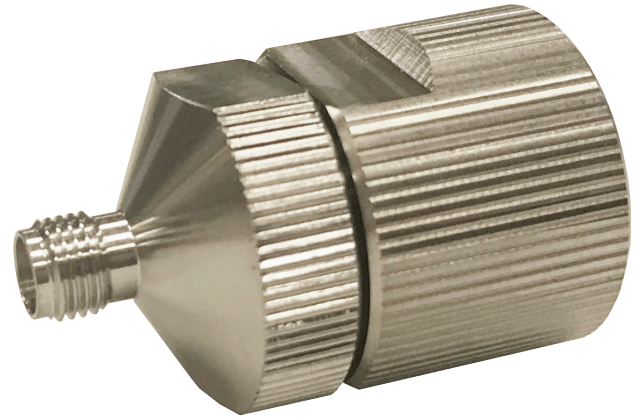
# PNMDF3.5F Adapter

## Materials and Plating

Connector Parts	Material	Plating
Center contact	CuBe	Gold, min. 1.27 $\mu$ m, over chemical nickel
Outer contact	Stainless steel	Passivated
Coupling nut	Stainless steel	Passivated
Dielectric	PEEK	

## Interface

According to	IEC 60169-23
Mechanically compatible with	2.92mm and SMA



## Electrical Data

Impedance	50 $\Omega$
Frequency	DC to 26.5 GHz
Return loss	$\geq 26$ dB (DC - 26.5 GHz)
Insertion Loss	$\leq 0.04 \times \sqrt{f}$ (GHz) dB
Insulation resistance	$\geq 5$ G $\Omega$
Center contact resistance	$\leq 3.0$ G $\Omega$
Outer contact resistance	$\leq 2.0$ G $\Omega$
Test voltage	1000 V rms
Working voltage	335 V rms
RF-leakage	$\geq 100$ dB up to 1 GHz

## Mechanical Data

Mating cycles	$\geq 500$
Center contact captivation	$\geq 27$ N
Coupling test torque	1.70 Nm
Recommended torque	0.08 Nm to 1.10 Nm

## Environmental Data

Temperature range	-40°C to 85°C
Thermal shock	MIL-STD-202, Method 107, Condition B
Corrosion	MIL-STD-202, Method 101, Condition B
Vibration	MIL-STD-202, Method 204, Condition D
Shock	MIL-STD-202, Method 213, Condition I
Moisture resistance	MIL-STD-202, Method 106
2002/95/EC (RoHS)	Compliant

## Packing

Standard	1 piece in box
Weight	37.9 g / piece

While the information has been carefully compiled to the best of our knowledge, nothing is intended as representation or warranty on our part and no statement herein shall be construed as recommendation to infringe existing patents. In the effort to improve our products, we reserve the right to make changes judged to be necessary.

